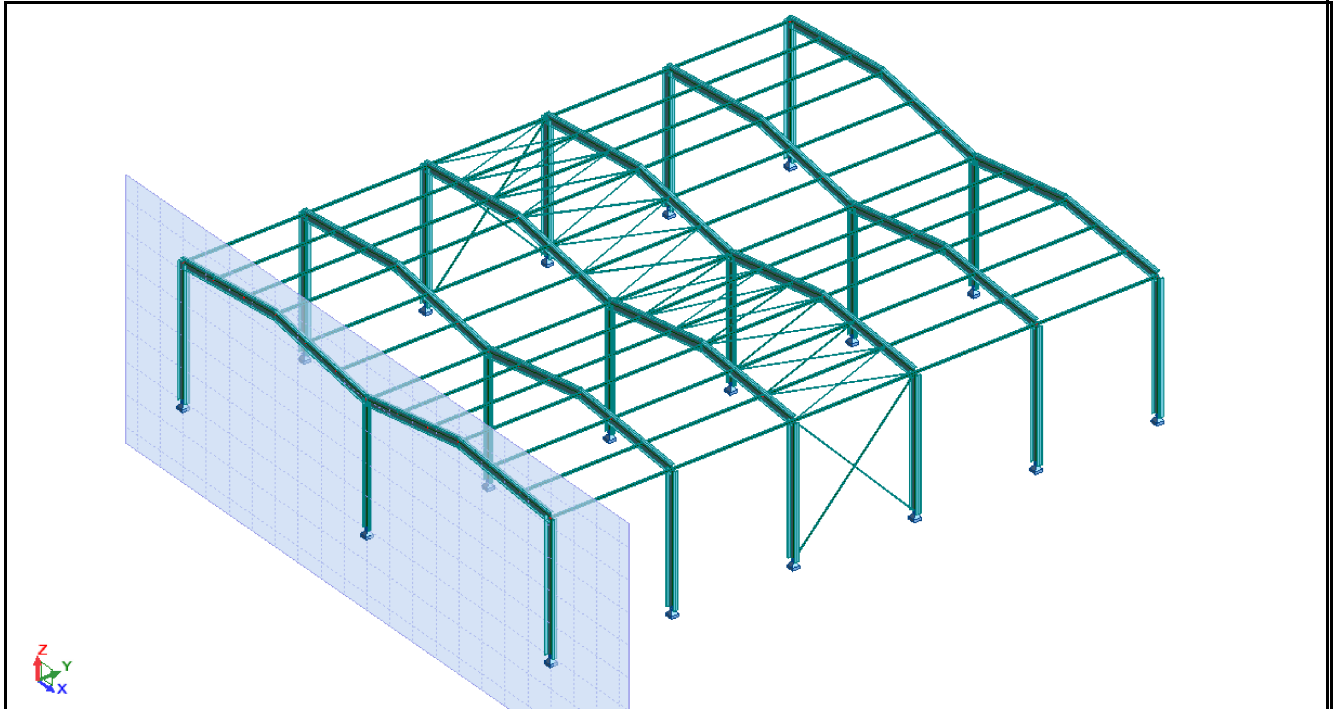


NOTE DE CALCUL

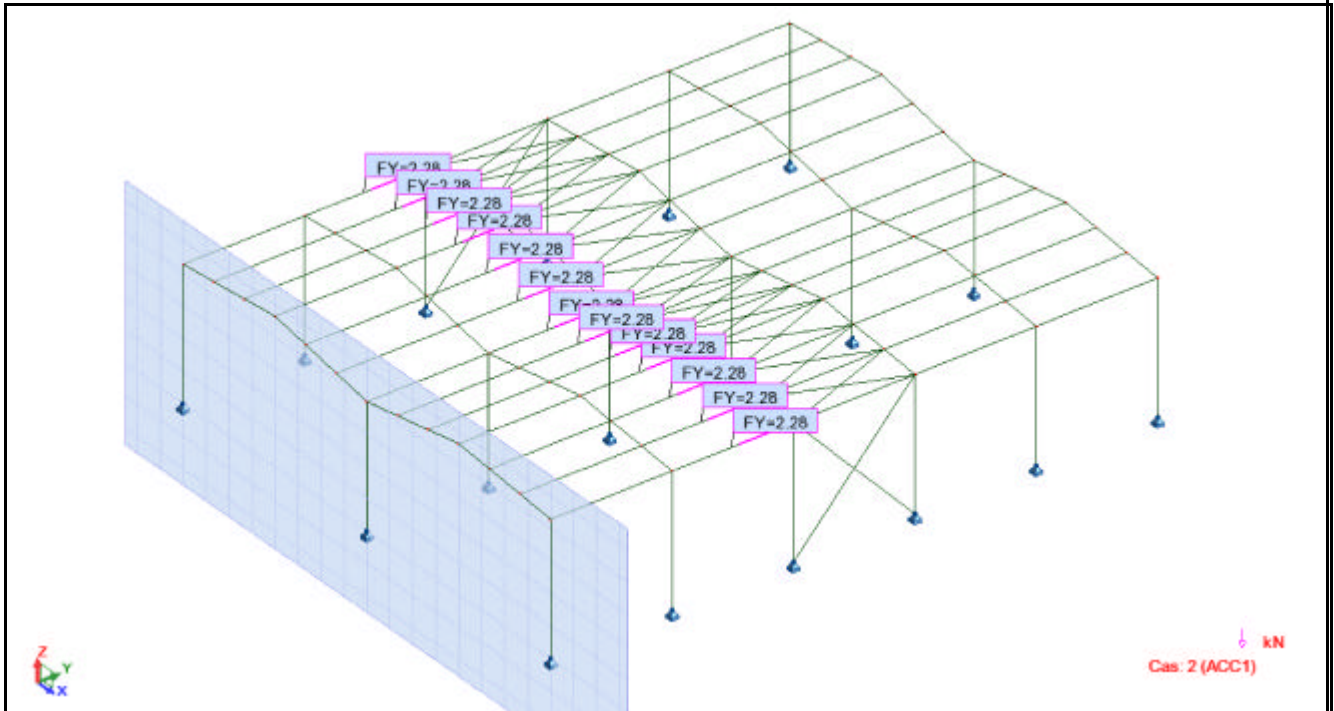
Projet : BÂTIMENT

Auteur : Jana LECOMTE

Vue



Vue - Cas : 2 (ACC1)



Contreventement

Pièce	Profil	Matériau	Lay	Laz	Ratio	Cas
94 cvt_94	CAE 50x5	ACIER	279.15	279.15	0.10	2 ACC1
70 cvt_70	CAE 50x5	ACIER	279.15	279.15	0.10	2 ACC1
72 cvt_72	CAE 50x5	ACIER	279.15	279.15	0.07	2 ACC1
96 cvt_96	CAE 50x5	ACIER	279.15	279.15	0.07	2 ACC1
93 cvt_93	CAE 50x5	ACIER	279.15	279.15	0.06	2 ACC1
69 cvt_69	CAE 50x5	ACIER	279.15	279.15	0.06	2 ACC1
73 cvt_73	CAE 50x5	ACIER	279.15	279.15	0.05	2 ACC1
95 cvt_95	CAE 50x5	ACIER	279.15	279.15	0.05	2 ACC1
71 cvt_71	CAE 50x5	ACIER	279.15	279.15	0.05	2 ACC1
97 cvt_97	CAE 50x5	ACIER	279.15	279.15	0.05	2 ACC1
98 cvt_98	CAE 50x5	ACIER	279.15	279.15	0.04	2 ACC1
74 cvt_74	CAE 50x5	ACIER	279.15	279.15	0.04	2 ACC1
75 cvt_75	CAE 50x5	ACIER	279.42	279.42	0.03	2 ACC1
99 cvt_99	CAE 50x5	ACIER	279.42	279.42	0.03	2 ACC1
100 cvt_100	CAE 50x5	ACIER	279.42	279.42	0.03	2 ACC1
76 cvt_76	CAE 50x5	ACIER	279.42	279.42	0.03	2 ACC1
78 cvt_78	CAE 50x5	ACIER	279.42	279.42	0.02	2 ACC1
102 cvt_102	CAE 50x5	ACIER	279.42	279.42	0.02	2 ACC1
77 cvt_77	CAE 50x5	ACIER	279.42	279.42	0.01	2 ACC1
101 cvt_101	CAE 50x5	ACIER	279.42	279.42	0.01	2 ACC1
104 cvt_104	CAE 50x5	ACIER	279.42	279.42	0.01	2 ACC1
80 cvt_80	CAE 50x5	ACIER	279.42	279.42	0.01	2 ACC1
79 cvt_79	CAE 50x5	ACIER	279.42	279.42	0.00	2 ACC1
103 cvt_103	CAE 50x5	ACIER	279.42	279.42	0.00	2 ACC1